

TECHNICAL SPECIFICATION FOR 11KV 800A NO LOAD DOUBLE BREAK AB SWITCHES WITH INSULATORS

1. SCOPE:

The specification provides for the manufacture, testing before dispatch, supply and delivery in full shape at destination stores of 3 phase 11 KV 800A AB Switches with Insulators for use on lines and Sub – Stations as per the particulars given in the schedule attached .

2. STANDARDS:

The switches shall confirm in all respect to the IS:1818/1972, IS:9920 Parts I to IV (Latest Version), and IS:9921 Parts I to IV (Latest Version)/The 11 KV 800A AB switches with insulators shall also confirm to REC specification No.43 of 1987.

3. CLIMATE CONDITIONS:

The climatic conditions under which the equipment shall operate satisfactorily are as indicated in Clause 23.1 of General and Financial terms and conditions for supply of materials.

4. RATINGS:

a) Nominal System Voltage	: 11 KV
b) Rated Voltage	: 12 KV
c) Rated impulse withstand Voltage	: 75 KV
d) Rated frequency	: 50 Hz
e) Rated current	: 800A
f) Rated peak short circuit current	: 40KA
g) Rated short time current	: 16KA
i) Rated maximum duration of short circuit	: 1 second

5. LIMITS OF TEMPERATURE RISE:

The limits of temperature rise shall be as given in Table 4 of IS:1818/1972 and the reference conditions mentioned therein.

6. CONSTRUCTION: (11 KV 800 A AB SWITCHES WITH INSULATORS)

- 6.1. The Air Break switches shall have 3 pole gang operated center post rotating type, double break horizontal mounted no load break with insulators as specified in Section – IV. All ferrous parts except those of stainless steel shall be hot dip galvanized. All nuts & MS Bolts other than stainless steel shall be galvanized properly conforming to IS: 2633 (Latest Version). The threads of nuts and tapped holes cut after the galvanization shall be well oiled or greased.
- 6.2. The switches are meant for mounting on structures at a height of 6.1 to 7.32 meters from ground level. All the rotating parts, the bell the crank lever and fork at the end of operating pipe shall be made of mild steel or forged but not cast. This shall be clearly confirmed in the tender specification.

- 6.3. **i) BLADES:** The blades shall be best hard drawn electrolytic copper strip / extruded hollow copper tube of the same quality and be capable of carrying rated current continuously and the fault current, with safety at all times. The contact end shall be tin coated.

ii) FIXED CONTACT: The fixed contact element shall be made of rolled/ extruded electrolytic grade copper flat and with flexible ends, where required shall be made from soft electrolytic grade copper sheet. The contacts assembly shall be so designed that while carrying the rated continuous current, the temperature rise does not increase beyond the value specified in IS i.e. 40 Degrees Centigrade above ambient. The contact shall be self – release jaw – type and suitable stainless steel springs of sufficient pressure, shall be provided to ensure proper contact in the closing position.

Fixed contacts shall be provided with 2 sets of stainless steel (non-magnetic) springs each on either side of fixed contact blades so that smooth contact is made for making and breaking contact.

Fixed and moving contacts shall be designed to carry current with current density of 2 Amps / Sq.mm.

All bolts used in the current path of switch contact shall be of stainless steel

iii) ARCING HORNS: The AB (Air Break) Switch shall be provided with 3 sets of removable rod type arcing horn with " Make Before" and "Break after" feature. Arcing horns of GI material one set per each phase shall be provided. The diameter of the arcing horn rods shall be not less than 10mm for 11kV 800A.

iv) SWITCH TERMINALS: The terminal pad shall be made of rolled / extruded electrolytic grade copper flat having a cross sectional area equal to that of the blade. It shall be constructed that an intimate contact with the contact element is ensured in case of 11kV 800A. The connector to the switch terminal shall be suitable for ACSR conductor. The aluminium connectors of appropriate size shall be supplied for each end and for each phase of the switch.

v) BEARING: Gun metal bush bearing of a reputed make is to be used for 11kV 800A AB Switches. The bushing should be got approved by competent authority.

Each rotating insulator stack shall have thrust roller bearings and shall rotate into gun metal bush bearings contained in a suitable weather proof housing. The housing shall be fitted with the greasing nipple.

- 6.4. The leakage current shall pass to earth and not between terminals of the same pole or between poles. A reliable earthing terminal having a clamping bolt of at least 12mm dia provided on the frame at one end of the isolator shall be provided. It shall be marked with the earth symbol in indelible manner on / or adjacent to the terminal.
- 6.5. The operating mechanism shall be suitable for normal operation by one man without undue effort.

This shall comprise of operating pipe of dia 32mm (NB) for 11kV and length 6.0 meters with intermediate coupling and operating handle. The mechanism shall provide adequate mechanical leverage with minimum of lost motion. The pipe shall conform to medium class GI pipe of IS: 1239 (Latest Version). The AB Switches shall be constructed in such a manner to permit pad locking in both open position. A pad lock of reputed make shall be provided.

The operating handle shall be duly insulated with material such as special compound latex (other than super compound latex the material should be got approval with EPDCL) to ensure safety to the operating personals

- 6.6. **BOLTS & NUTS:** The required bolts, nuts, washers etc. for assembling the complete – air – break switch for fixing the insulators to the metallic parts of AB Switch at both top and bottom for fixing the AB Switch to the structure shall be supplied with the equipment at no extra cost. Bolts and nuts shall be provided with lock- washers and lock – nuts whenever required. All the bolts and nuts used in the current path shall be of stainless steel.
- 6.7. The clearance shall be as given below:
- a) Phase clearance (i.e. center to center distance between : 914.4 cm
The insulators of adjacent phase in the assembled position of the switch)
 - b) Center to center distance between insulators of the : 457.2 mm
consecutive poles of the same phase in the assembled position of the switch
 - c) Minimum clearance between phases for any position of the switch : 457.2mm

There should be adequate clearance between HG Fuse set and AB Switches operating handle when the switch is erected on a transformer structure.

- 6.8. **LOCKING ARRANGEMENTS:** The AB (Air Break) switches shall be constructed in such a manner to permit pad locking in both open and close position. A pad lock of reputed make shall be provided.
- 6.9. **GALVANIZING:** All ferrous parts should invariably be hot dip galvanized. However, the bolts, nuts, washers, spring washers and split pins, which can be electro galvanized. The threads of nuts and tapped holes that shall be cut after the galvanization shall be well oiled or greased.

7. SUPPLY OF AB SWITCHES WITH POST TYPE INSULATORS:

- 7.1. The insulators for the isolating switches shall be of porcelain post type and shall be in accordance with IS: 2544 and IS : 5350 (Part – I to IV) latest version. The assembly of the metal parts and porcelain shall be such a manner that the metal and porcelain part shall not have any deteriorating effect or create undue stresses adversely affecting the mechanical and electrical strength of the unit arising out from any harmful expansion. **The insulators shall be invariably procured from registered vendors of EPDCL only.**
- 7.2. **GENERAL REQUIREMENTS:** The porcelain shall be sound, free from defects, thoroughly verified and smoothly glazed.

Unless otherwise specified, the glaze shall be brown in colour. The glaze shall cover all the exposed porcelain parts of the insulator except those areas, which serve as supports during firing and required to be left un-glazed.

Precautions shall be taken during design and manufacture to avoid the following:

- a) Stresses due to expansion and contraction, which may lead to deterioration.
- b) Stress connection due to direct engagement of the porcelain with the metal fittings.
- c) Retention of water in the recesses of metal fittings, and
- d) Shapes, which do not facilitate easy cleaning by normal methods.

7.3. Cement used in the construction of post insulators shall not cause fracture by expansion or loosening by contraction and proper care shall be taken to locate correctly the individual parts during cementing. The cement shall not give rise to chemical reaction with metal fittings, and its thickness shall be as uniform as possible.

7.4. The threads of tapped holes in the post insulator metal fittings shall be cut after giving anti – corrosive protection and shall be protected against rust by greasing or other similar means.

7.5. **TESTS** : The insulators shall comply with the relevant tests as specified in IS : 2544.

7.6. **MARKING**: Each insulator shall be legibly and indelibly marked to show the following:

- a) Name or trade mark of the manufacturer
- b) Month and year of manufacturing
- c) Minimum failing load in Newtons
- d) ISI, Certification mark, if any

Marking on porcelain shall be printed and shall be applied before firing.

8.0. **TESTS**:

8.1. The following tests shall be carried out as per IS: 1818/1972 on complete isolators and their operating devices.

8.1.1. **TYPE TEST**: The following shall constitute the type tests.

- a) Impulse voltage dry test.
- b) Power frequency voltage dry test on main circuits.
- c) Power frequency voltage wet test on main circuits.
- d) Temperature rise test of the main circuits.
- e) Measurement of the resistance of the main circuits.
- f) Test to prove capability of carrying the rated peak short circuit current and the rated short time current.
- g) Operation test.
- h) Mechanical endurance test.

NOTE: All the above tests shall be conducted as per the relevant IS Specification and a copy of the test report shall be furnished along with the tender.

8.1.2. **ROUTINE TEST**: The following shall comprise routine test:

- a. Measurement of resistance of the main circuit
- b. Test to prove satisfactory operation.

The ambient air – conditions during the test shall be as specified in IS.

9. **MARKING**:

- a) AB Switches and their operating device shall be provided with the name plates in accordance with the Table 6 of IS : 1818 / 1972. The Name plate shall be adequate weather and corrosion proof.
- b) The name plate should be fitted in a position where it can be visible in normal service and installation.
- c) If the AB Switch consist of several independent poles, each pole shall be provided with the name plate.
- d) The name plate shall be marked with the following

- a. Name of manufacturer
- b. Name of the product
- c. EPDCL Purchase Order Number & Date
- d. Manufacturing month & Year
- e. EPDCL Logo shall be embossed on plate and should be completely welded

10. INSPECTION:

- 10.1. All routine tests and inspection shall be made at the place of manufacturer unless otherwise especially agreed upon by the manufacturer and purchaser at the time of purchase. The manufacturer shall afford the inspector representing the purchaser all reasonable facilities without charge to satisfy him that the material is being furnished in accordance with this specification.
- 10.2. The purchaser has the right to have the tests carried out at suppliers cost by an independent agency wherever there is a dispute regarding the quality of supply.

11. PACKING:

The air-break switches shall be delivered suitably packed. Although the method of packing is left to the discretion of the manufacturer, it should be robust for rough handling that is occasioned during transportation by rail / road.

12. DRAWING:

Two sets of detailed dimensional drawings of each part of the complete air break switches along with operating instructions shall have to be submitted along with the tender.

13. GUARANTEED TECHNICAL PARTICULARS:

The Guaranteed Technical Particulars of the air break switches shall be given by the bidder as per Annexure - I.

14. THE SCHEDULE OF REQUIREMENT, DESIRED DELIVERY AND PRICES:

- 14.1. The Schedule of requirements and desired deliveries are indicated in Section – IV.
- 14.2. The schedule of prices shall be indicated as per Price Schedule for AB switches with Insulators.

15. GENERAL:

- 15.1 Any design other than the one so specified herein may also be offered specification.
- 15.2 A fully dimensioned sketch showing the full details of gang operation fixed and moving contacts should necessarily accompany the tender.
- 15.3 A neat dimensioned sketch showing the details of the switch should accompany the tender.

NOTE: 1. The tenderer shall follow the dimensions while manufacturing of AB switches shown in the drawing enclosed to the specification.

16.0. Performance security clause:

The successful bidder shall furnish 10% of contract value towards performance security which includes 5% delivery performance. In case there are delivery delays, from the available amount up to 5% shall be recovered for not adhering to the scheduled deliveries as per the purchase order obligations and the supplier should recoup the amount so deducted by DD or BG again up to extent of 10% till warranty period is applicable as part of performance guarantee .

17. All bids submitted will also include the following information:

i. Copies of original documents defining the constitution or legal status, place of registration and principle place of business of the company or firm or partnership, etc.,

ii. The bidder should furnish a brief write-up, backed with adequate data, explaining his available capacity and experience (both technical and commercial) for the manufacture and supply of the required equipment within the specified time of completion after meeting all their current commitments.

iii. The bidder should clearly confirm that all the facilities exist in his factory for inspection and testing and these will be made available to the purchaser or his representative for inspection..

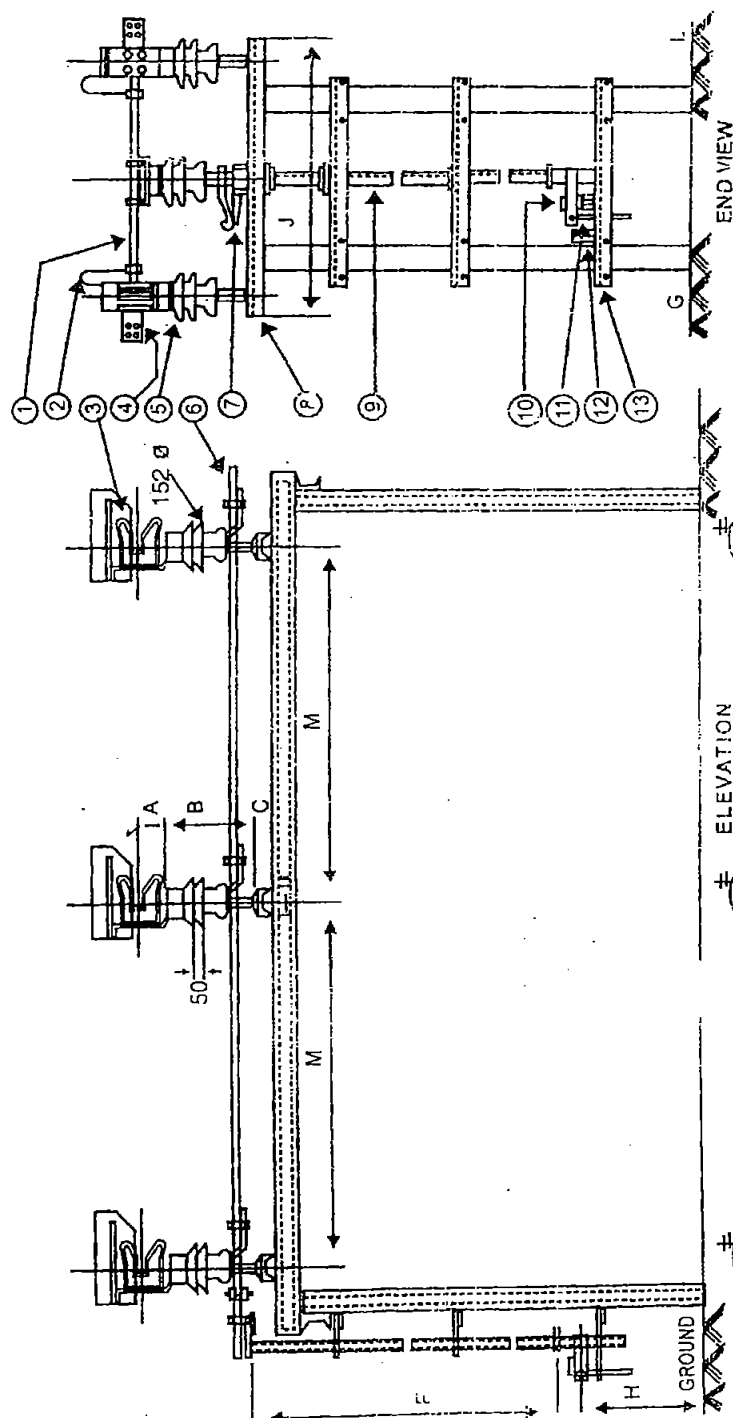
iv. Reports on financial standing of the Bidder such as profit and loss statement, balance sheets and auditor's report for the past three years, bankers certificates etc.

REFERENCE

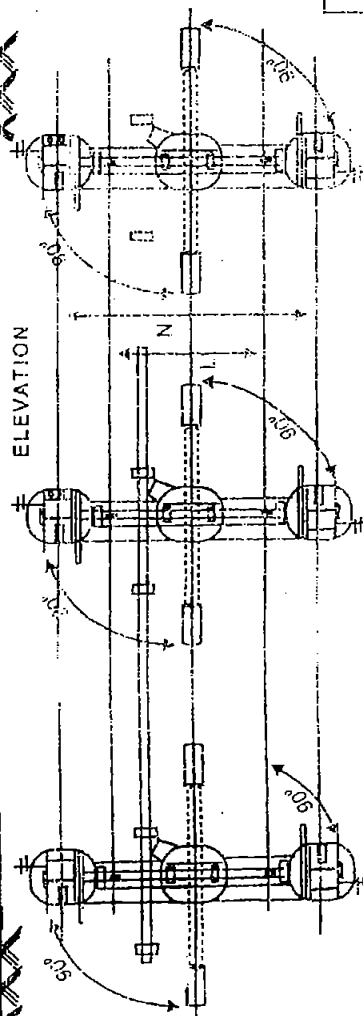
1. MOVING CONTACT : 38 OD x 32 MM I.D. CU. PIPE
2. ARCING HORNS Ø 10. G.I. ROUND
3. FIXED CONTACT : 2 NOS x 25 x 4 CU.
4. JUMPER PAD : 75 x 10 AL
5. INSULATORS : APPROVED MAKE
6. PHASE COUPLER PIPE : 25 Ø G.I.
7. BEARING HOLDER WITH BEARING
8. BASE CHANNEL : G.I. 100 x 50
9. DOWN PIPE : 6.1 PIPE 32 Ø CLASS 'B' L-5.8 mts
10. LOCKING ARRANGEMENT
11. OPERATING HANDLE : Ø 32 MM G.I. PIPE
12. BOTTOM OPERATING MECHANISM :
13. GUIDES. 3 NOS. 40 x 40 x 5 MS. ANGLE

NOTES:

1. DRAWING NOT TO SCALE.
2. DIMENSIONS ARE IN MM.
3. ALL FERROUS PARTS HOT DIP GALVANISED.
4. MAIN ROTATING POST BEARING IS THRUST BALL BEARING. ^{IN}
5. ALL CONTACT PARTS SHALL BE PLATED.
6. ALL BEARINGS ARE PROVIDED WITH GREASE NIPPLES.
7. CLAMPS ARE TO BE WELDED FINAL SETTING.
8. STANDARD BOLTS & NUTS SHALL BE USED; ALL THE BOLTS & NUTS SHALL BE ELECTRO GALVANISED.

TOLERANCE
+ 5%

ELEVATION




PLAN

CUSTOMER

P.O. No. :

11KV 300 A, TRIPLE POLE,
DOUBLE BREAK AS SWITCHES

SCALE: N.T.S.	
DATE	
DRAWN	
CHECKED	
OVER	

TYPE	RATING		A	B	C	D	E	F	G	H	I	J	K	L	M	N	O
TABLE	300 A		115	254	50		130	15800		720	1000	995		407	520		751

**GUARANTEED TECHNICAL PARTICULARS FOR 11KV 800A NO LOAD DOUBLE
BREAK AB SWITCHES WITH INSULATORS**

Sl.No.	DETAILS	GUARANTEED PARTICULARS
	AIR BREAK SWITCHES	
1	Name of the manufacturer	
2	Whether single break or double break	
3	No. of poles	
4	Frequency	
5	Voltage rating	
6	Current rating in Amps i) Normal ii) Maximum with duration	
7	Temperature rise of the following at full rated current in °C over ambient temperature i) Copper contacts with coating ii) Terminals of switches intended to be bolted to the external conductors. iii) Metallic parts acting as springs	
8	Whether contacts are silver coated or tin quoted along with thickness of coating in mm	
9	Voltage drop across terminals of poles	
10	Short time current and duration	
11	Material of fixed contact	
12	Material of moving blade	
13	Material of terminal connector	
14	Type diameter and length of operating handle	
15	Material of arcing horns	
16	Size and length of base mounting channel	
17	Whether the air break switch is complete with all accessories	
18	Whether dimensional drawings are enclosed with the tender	
19	Minimum clearance between phases (the center of distance between the insulators of adjacent phases in the assembled position of switch)	
20	Whether mechanical inter lock has been provided for arcing switches	
21	Type of bearings use in: a. Rotating insulator stack. b. To earth and between poles.	
22	Impulse with stand voltage with 1/50 MS wave positive and negative polarity i) Across Isolating Distance ii) To earth and between poles	
23	One minute power frequency with stand voltage across isolating distance to earth and between poles	

Sl.No.	DETAILS	GUARANTEED PARTICULARS
II	PARTICULARS OF INSULATORS	
1	a) Type of Insulator b) Name of manufacturer of Insulators c) Height of the Insulator d) Diameter of the smallest shell e) No. of units per stack	
2	ELECTRICAL CHARACTERISTICS: a) Flash over Voltage b) Dry Power Frequency c) Wet Power Frequency d) Impulse Voltage of 1/50 micro-seconds(+ve) e) Impulse Voltage of 1/50 micro-seconds(+ve) f) Withstand Voltage	
3	Power frequency puncture withstand voltage of unit	
4	Mechanical Characteristics: a) Cantilever strength upright b) Cantilever strength under hang c) Torsional strength d) Tensile strength	
5	General Characteristics: a) Minimum creepage distance b) Weight of complete unit	
6	Standard to which insulator conforms: a) Minimum creepage distance b) Weight of complete unit:	
7	Standard to which insulator conforms	

NOTE: Value should be given in Metric Units